

倚江临海的现代中式休闲场所

铭源会所

电话：4008200200

项目地址：上海市奉贤区现代农业园区



新楼盘

35

NEWHOUSE

新中式风

佳图文化 出品

# 新楼盘

NEWHOUSE 图解地产与设计

佳图文化 出品  
中国林业出版社

35

专题 / Feature

新中式风 / New Chinese Style

新世界集团

SOHO地产

名家名盘 / Master and Masterpiece

上海招商万科佘山珑原别墅

商业地产 / Commercial Buildings

宜昌万达广场

水电之都的核心城市综合体



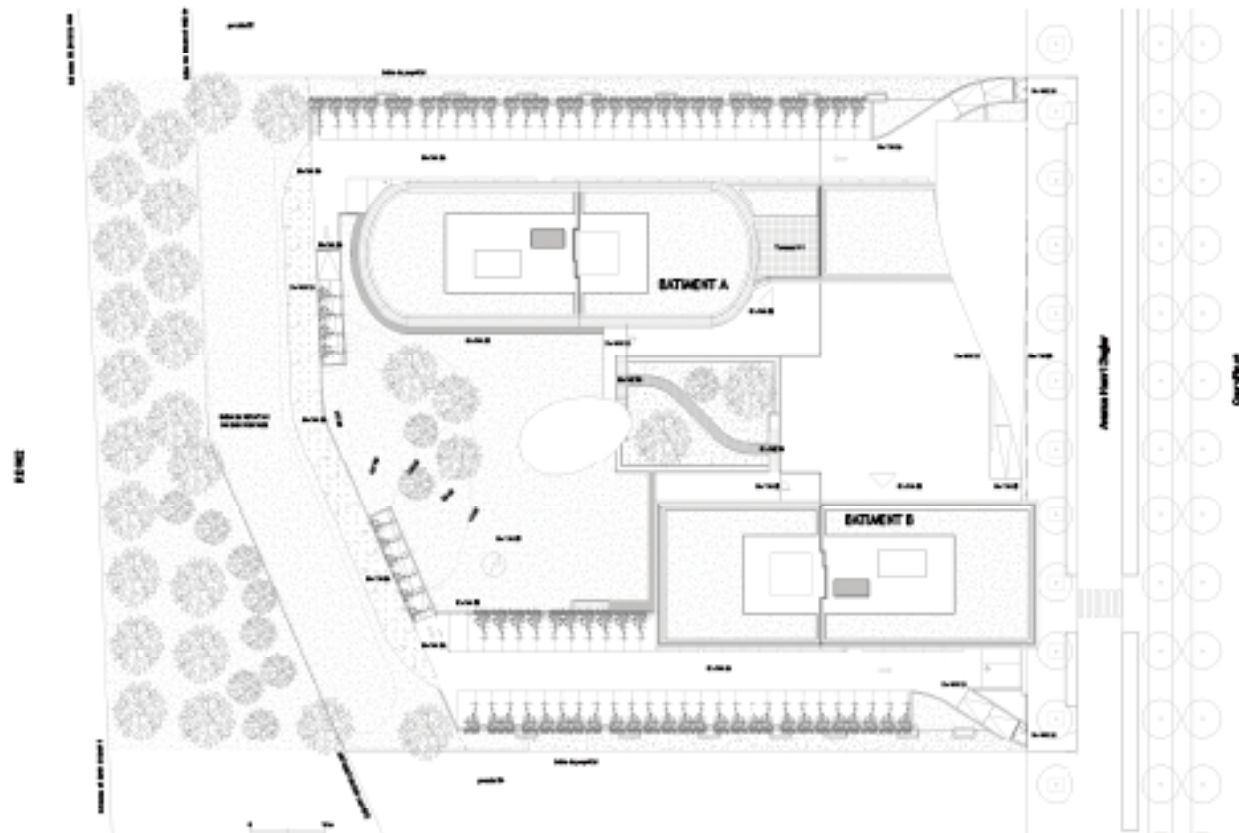
定价：35.00元 (US \$ 15)





#### 项目概况

加利利办公楼是在安德洛墨达城市开发区首批建成的项目之一，该城市发展空间位于法国图卢兹附近的布拉尼亚克，其独特细节创造了一种独一无二的环境，使得高质量的建筑在此得以成形。



# FREE SPACE CONNECTED BY HELICAL VEIL | Le Galilée

## 螺旋帷幕连接的纵横空间 —— 加利利办公楼

项目地点：法国布拉尼亚克

建筑设计：法国Bellecour工作室

设计人员：Wilfrid Bellecour、Vincent Ballion、Julien Franco、  
Brice Kester、Damien Lamy、Sinda Tobni

摄影：Christophe Picci、Nicolas Borel、Quentin Jeandel、  
Denis Gliksman、Studio Bellecour

Location: Blagnac, France

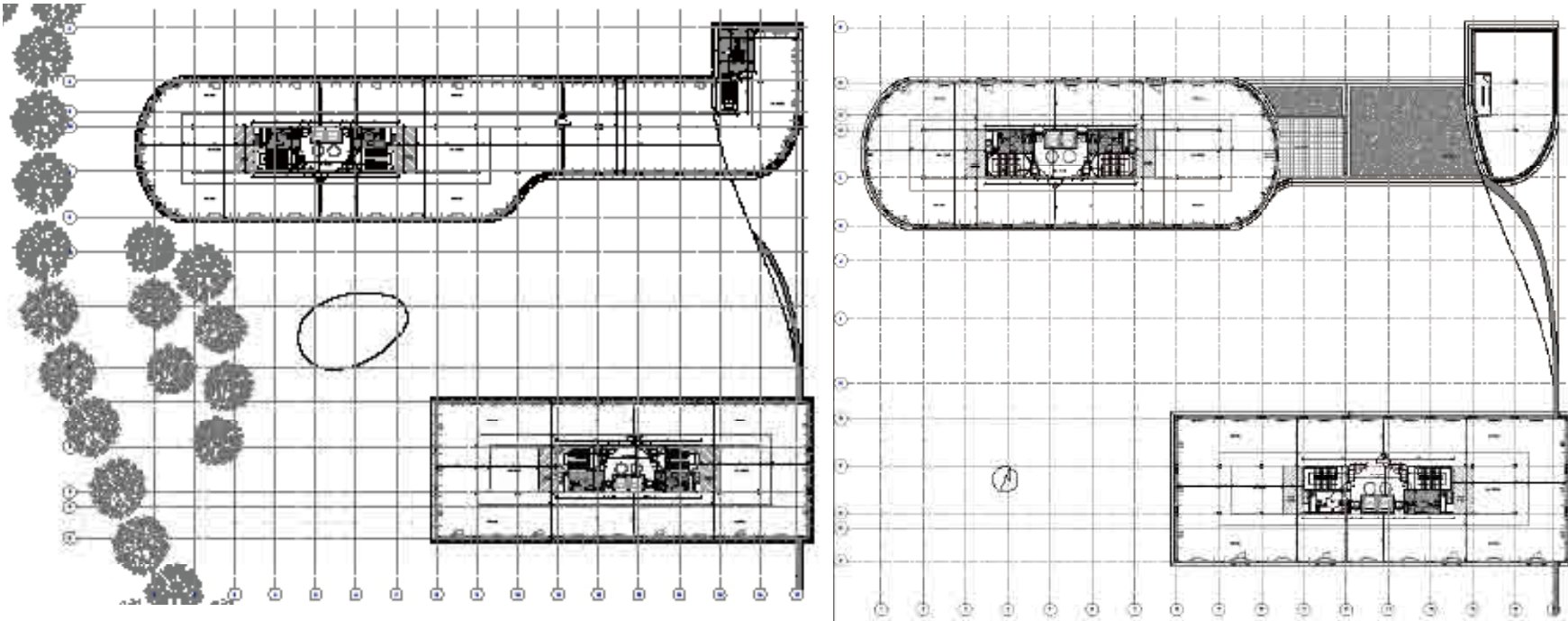
Architectural Design: Studio Bellecour

Architects: Wilfrid Bellecour, Vincent Ballion, Julien Franco, Brice Kester,  
Damien Lamy, Sinda Tobni

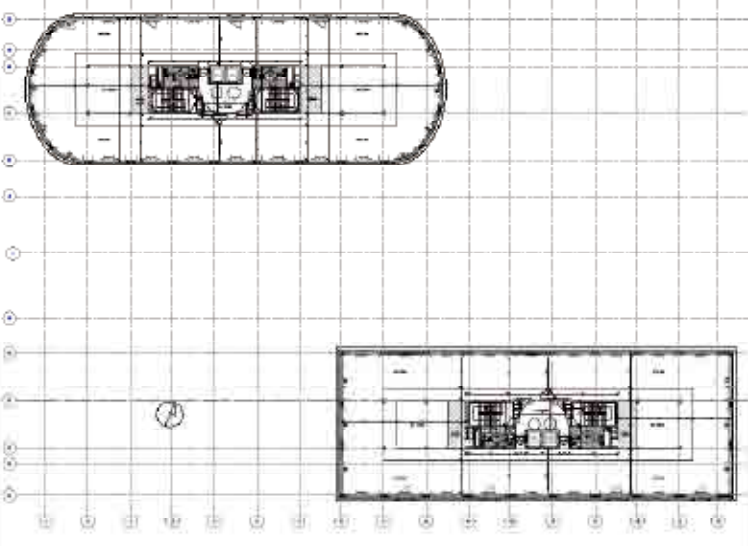
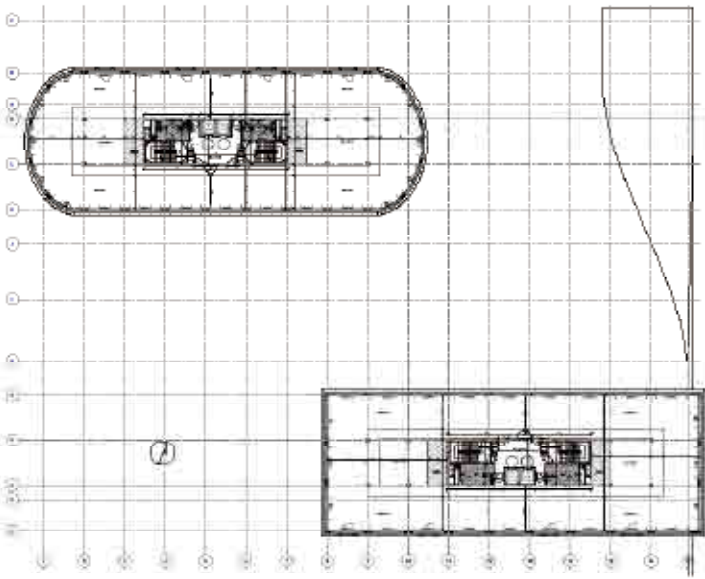
Photography: Christophe Picci, Nicolas Borel, Quentin Jeandel, Denis Gliksman,  
Studio Bellecour











规划布局与建筑设计

加利利的美学由几个元素共同演绎：对城市规则的理解，航空学的融入以及对这一地区的规格环境要求。

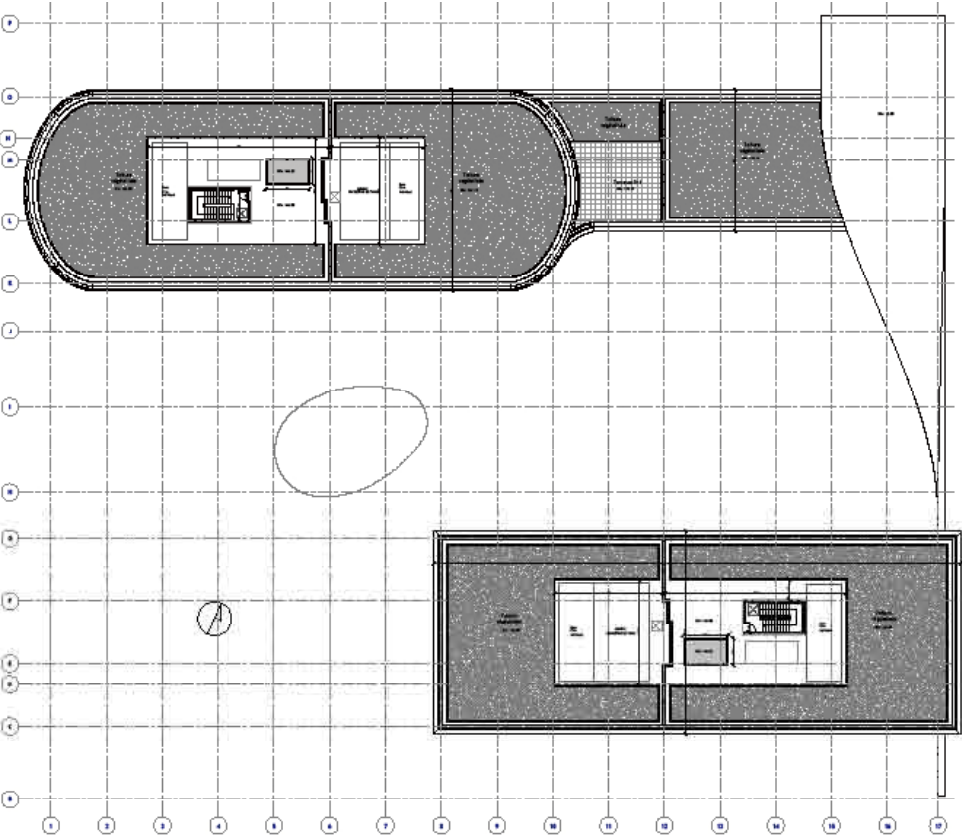
项目规划有两座明显的建筑，连接它们的是一条又长又白的混凝土帷幕。总体看来，帷幕融合了水平与垂直运动，呈螺旋状。它体现了建筑的双重特征：深度挖掘彼此身后景观的同时也保证了彼此间的连贯性。它复苏了项目位置的航空学背景，以街前标记保护建筑，也以诱人景观迎接你我。

特殊的隔热材料覆盖在两座楼上，由照明与环境特性（高环境质量）调制。独特的形式让它们在建筑群中脱颖而出，同质的立面处理也保持了整体项目的连贯性。

中央广场位于项目中心，人行通道在这里分别接入两个大厅。广场略微抬升，为围绕中央花园的半地下车库提供了空间，使其拥有自然的空气循环。







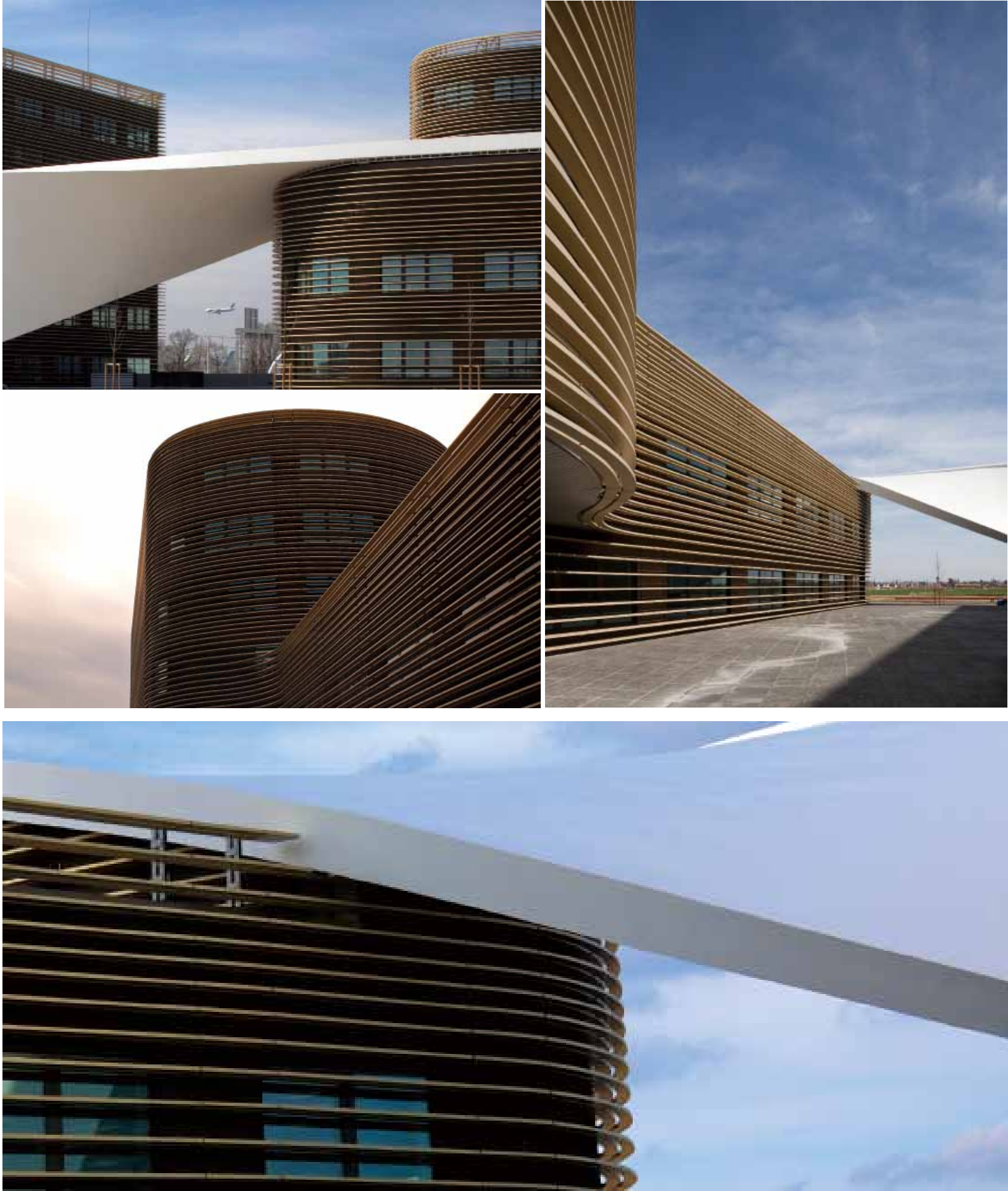
**Profile**

Galilée is one of the debut projects realized in the UDZ (Urban Development Zone) Andromède, in Blagnac, near Toulouse in France. The particular urban details of this UDZ in Blagnac provided a unique climate for the development of a quality architectural project.

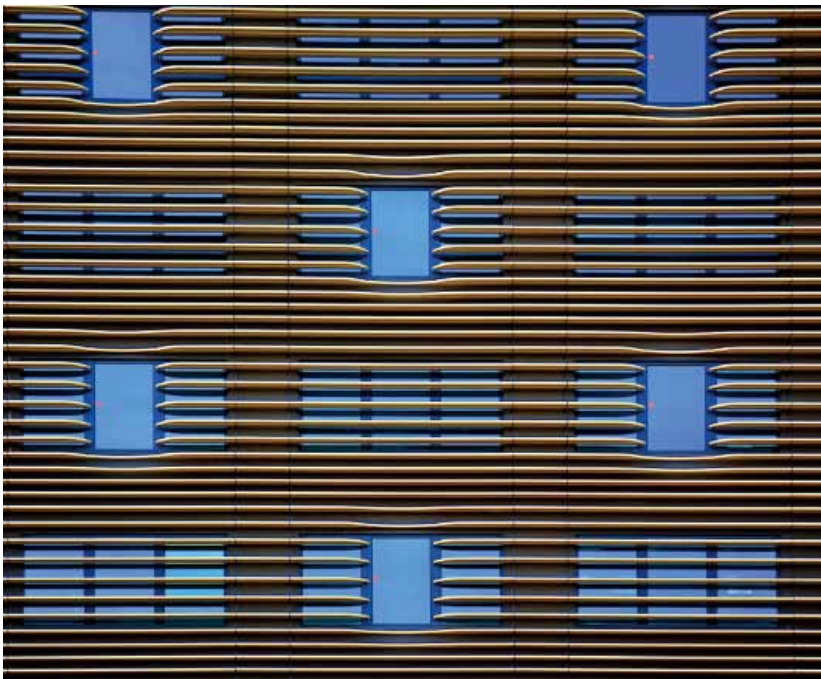
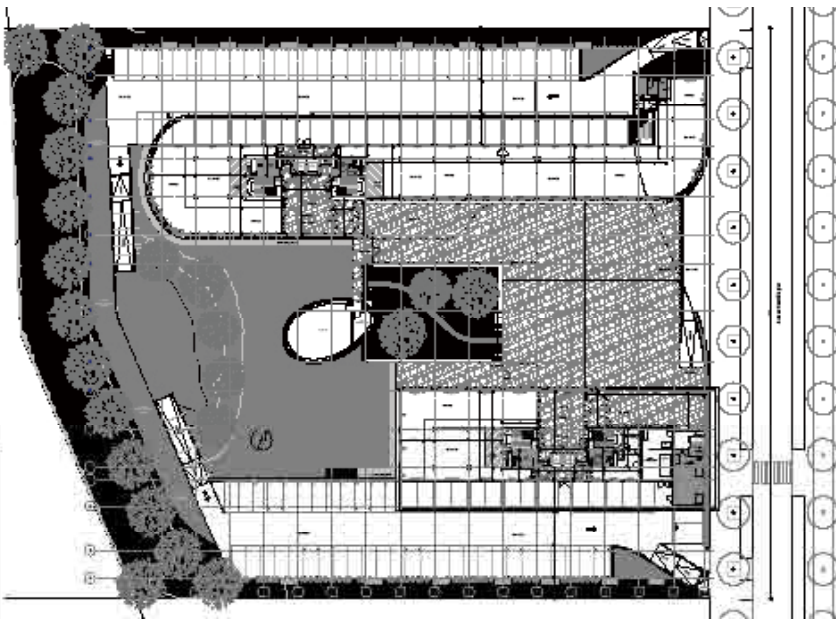
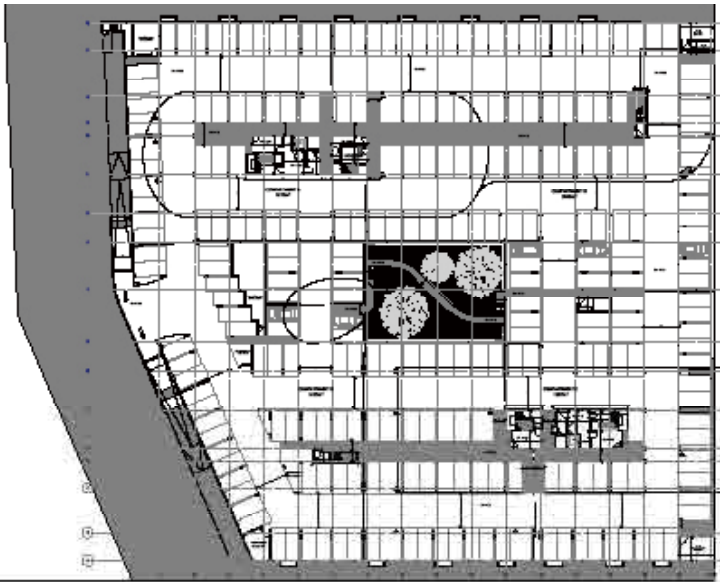
**Layout Design & Architectural Design**

The aesthetic of Galilée results from a combination of an interpretation of these urban rules, the immediate aeronautical context, and from the environmental requirements given in the specifications of the UDZ.

The plan is centered on two distinct buildings which are connected by a long white concrete veil. The veil, the primary visual feature of the overall plan, blends vertical and horizontal motions as it slowly curves in a helical movement. This veil achieves the double feature of insuring the continuity between each building while allowing







one to discover the rear landscape in all its depth. Thus this long concrete helix, which recalls the aeronautical context of the site, both protects the building by marking the front of street as well as welcomes us by its inviting view.

Two covered buildings wrapped in special insulating material and canopies, modulated according to the illumination, confer on the operation the environmental characteristics HEQ. A unique formal style distinguishes and individualizes these buildings. Nevertheless, the coherence and balance of the whole is maintained by the homogenous treatment of the facades.

A central square constitutes the central space, the place of privileged pedestrian access towards both halls. The square is slightly heightened to allow for a level of half-buried parking lots organized around a central garden with natural air circulation.

